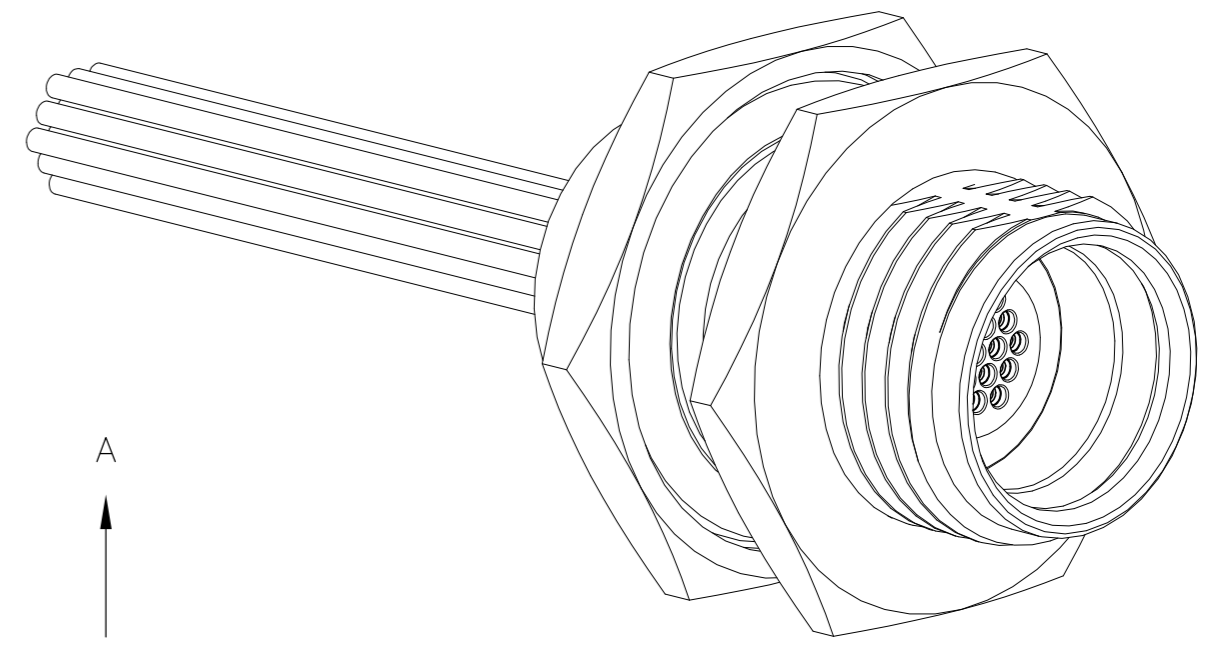
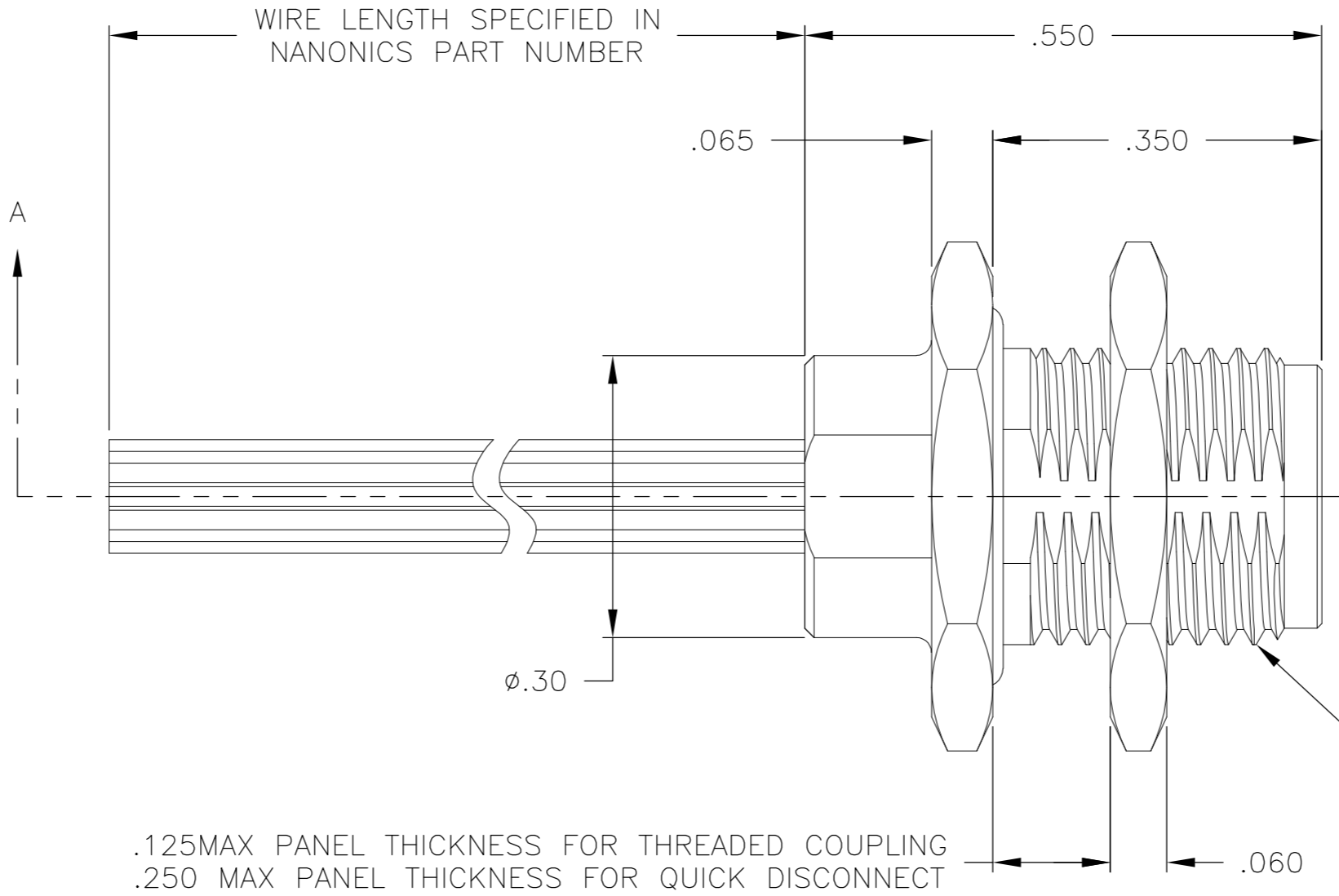
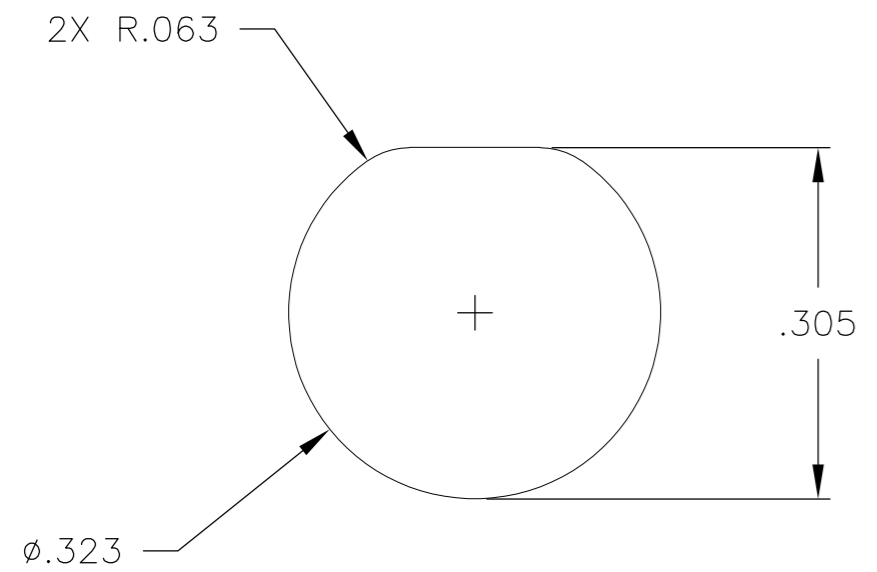


THIS DRAWING IS UNPUBLISHED. RELEASED FOR PUBLICATION
 © COPYRIGHT BY TYCO ELECTRONICS CORPORATION. ALL RIGHTS RESERVED.

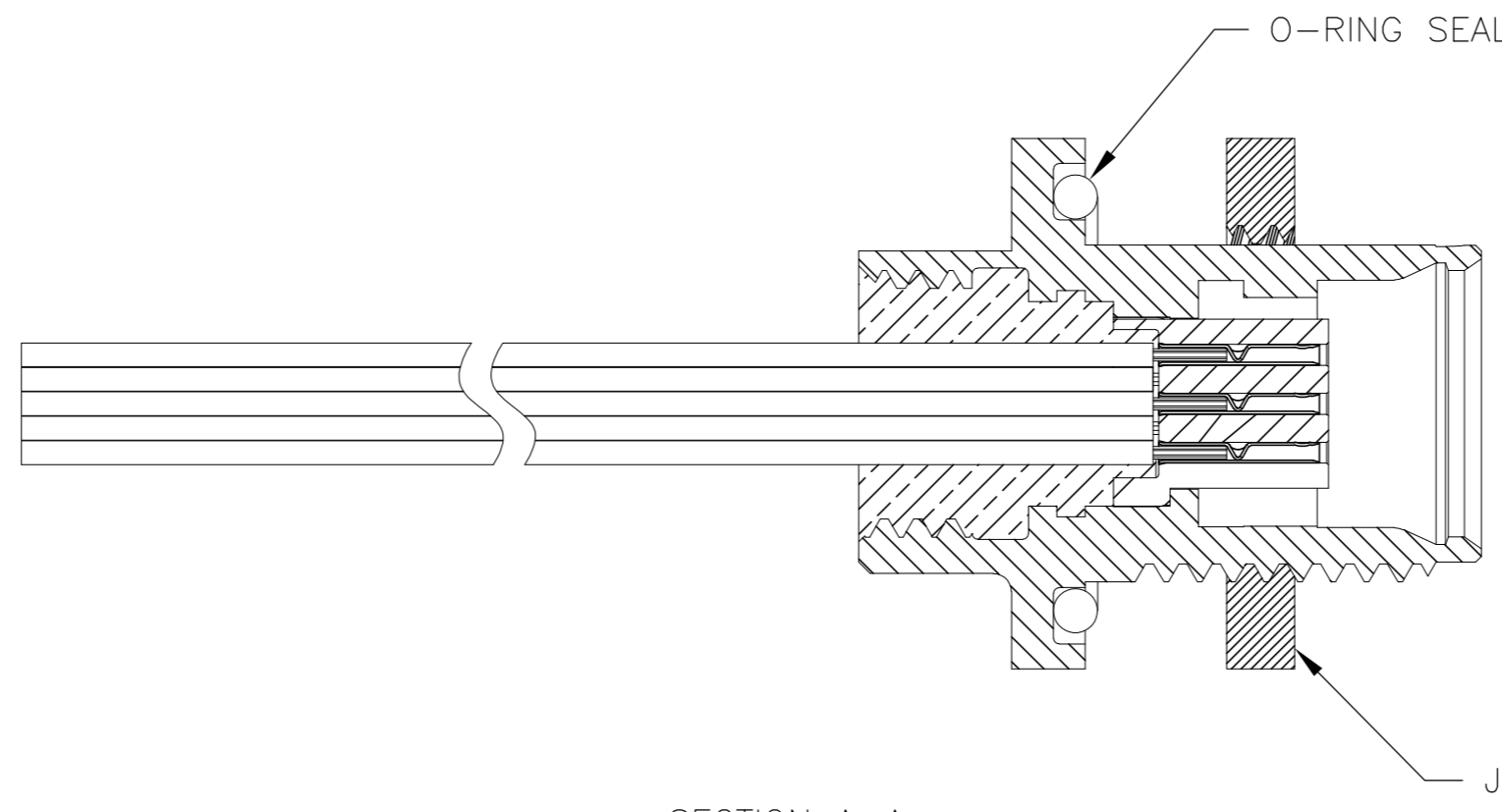
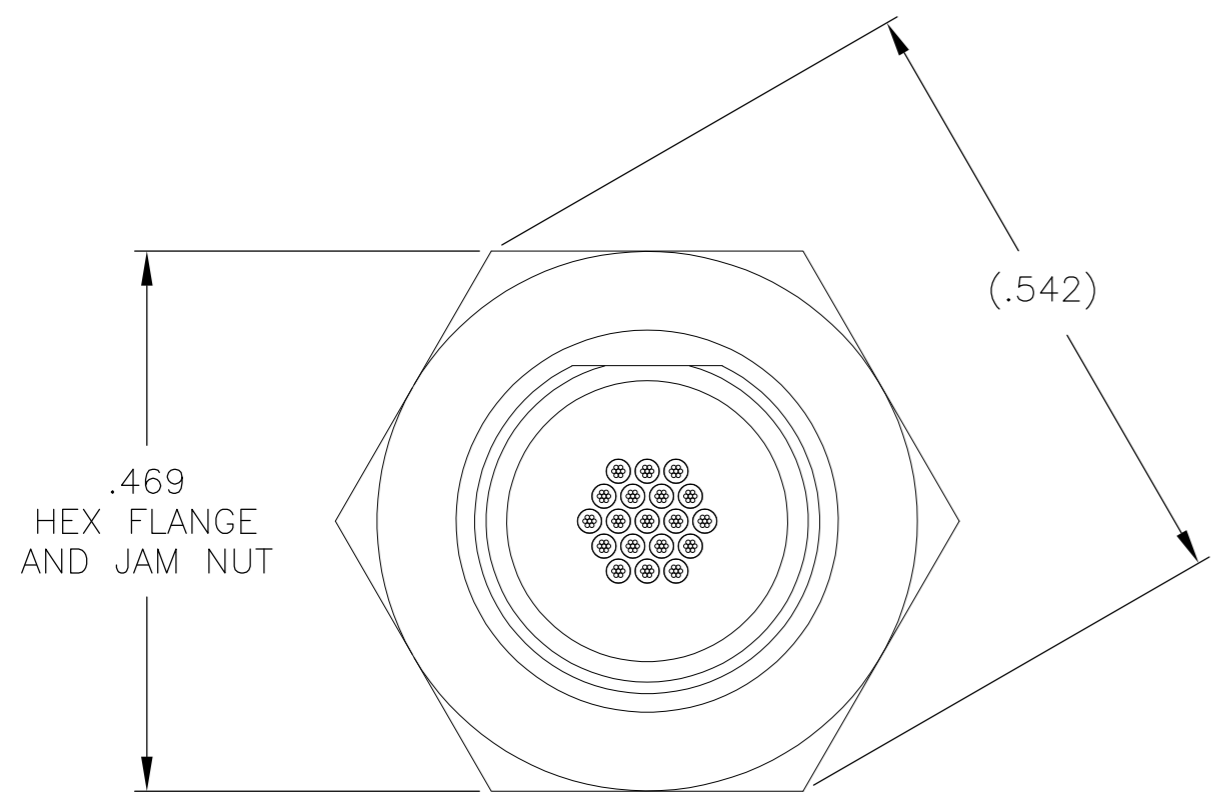
LOC		DIST		REVISIONS			
P	LTR	DESCRIPTION	DATE	DWN	APVD		
F1		UPDATE PER ECO-07-027966	26NOV07	JDM	MKS		

SUGGESTED PANEL CUT-OUT

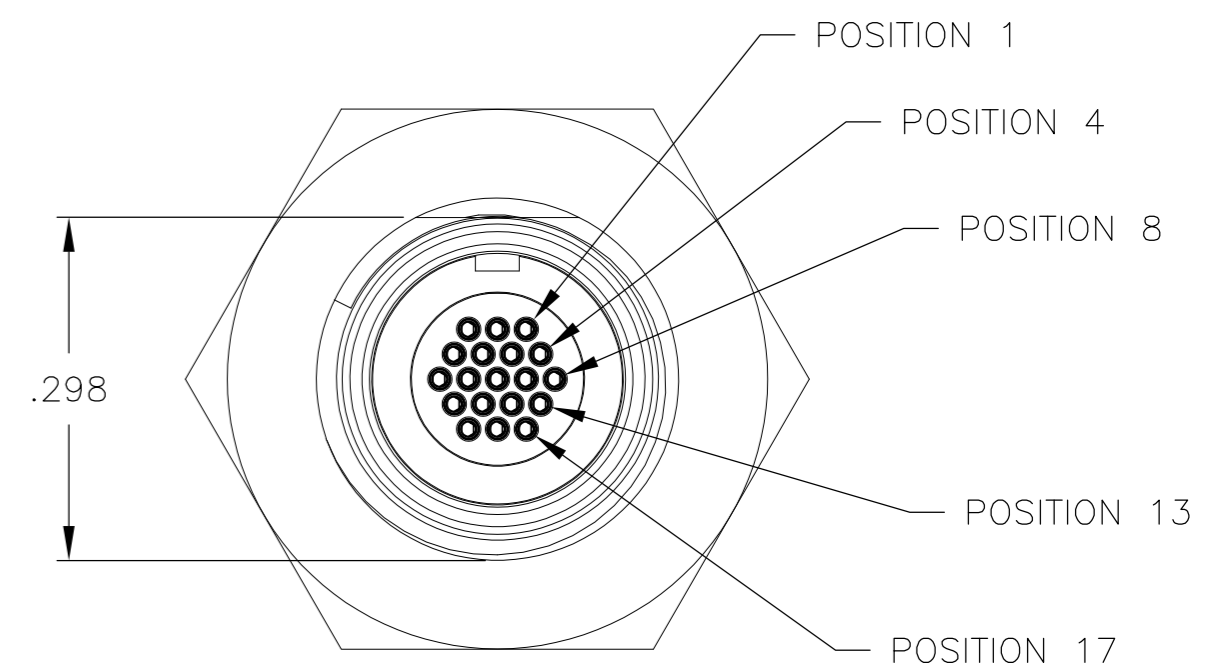


.125MAX PANEL THICKNESS FOR THREADED COUPLING
 .250 MAX PANEL THICKNESS FOR QUICK DISCONNECT

M8.0 X 0.75-6g THREAD



SECTION A-A



- CONNECTOR BODY AND JAM NUT MATERIAL: 6061-T6 ALUMINUM, ELECTROLESS NICKEL PLATED PER SAE-AMS-C-26074 OR SAE-AMS-2404E (STANDARD) OR BLACK CHROME PLATED PER MIL-DTL-14538D OVER ELECTROLESS NICKEL PER SAE-AMS-C-26074 OR SAE-AMS-2404E
INSULATOR MATERIAL: LIQUID CRYSTAL POLYMER (LCP) PER MIL-M-24519 OR PER ASTM D5138
O-RING MATERIAL: FLUOROSILICONE
- WIRE TERMINATION: 28 AWG SOLID, 30 AWG STRANDED WIRE OR SMALLER
- LUBRICATE O-RING WITH PARKER SUPER-O-LUBE PRIOR TO INSTALLATION, TYCO P/N 997053-1
- THIS DRAWING PREVIOUSLY IDENTIFIED AS NANONICS 303-0030

THIS DRAWING IS A CONTROLLED DOCUMENT.		DWN	M. STORRY	7 MAY 99	Tyco Electronics Corporation Harrisburg, PA 17105-3608
DIMENSIONS: INCHES		CHK	E. PAULUS	7 MAY 99	
TOLERANCES UNLESS OTHERWISE SPECIFIED:		APVD	S. KAIN	26 JAN 00	
0 PLC ± - 1 PLC ± - 2 PLC ± .010 3 PLC ± .005 4 PLC ± - ANGLES ± 1°		PRODUCT SPEC	NAME		
MATERIAL: SEE NOTES		FINISH: SEE NOTES		APPLICATION SPEC	
CUSTOMER DRAWING		SCALE	6:1	SHEET	1 OF 1
SIZE		A2	CAGE CODE	OPJN9	DRAWING NO
WEIGHT		-		RESTRICTED TO	
SCALE		6:1		REV	
SHEET		1 OF 1		F1	

1589061

A